

SERIES: generation
PLAN: SEAVIEW



JUST IMAGINE THE VIEWS YOU'LL SEE

Designed to be built on piers, the Coastal-style Seaview home plan can also be built on traditional foundations and fits most narrow lots. The inverted floor plan offers 3 bedrooms and 2½ baths, including a master with separate shower and tub, with the option of 9-foot ceilings on both floors. Expansive rear sliding doors provide perfect access to outdoor enjoyment on porches

and decks. Other amenities include an open great room, a professionally designed kitchen with large pantry and raised breakfast bar, a separate breakfast room and dining room. There's space for parking on the ground level under the home. And, of course, Excel Homes offers hundreds of customization options and upgrades to give you the home of your dreams.

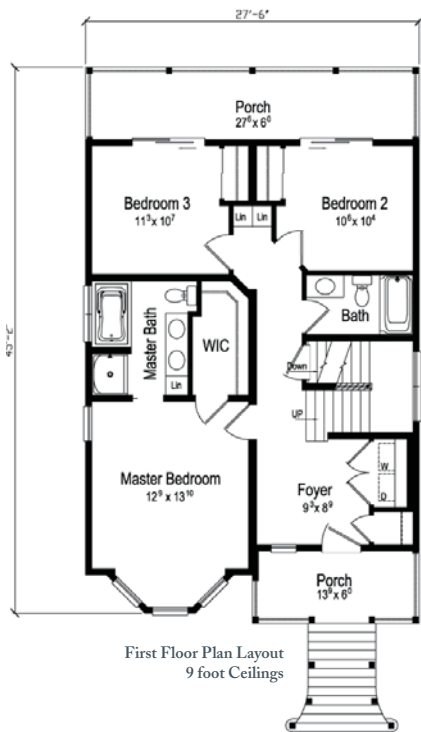
PLAN: SEAVIEW

1st Floor = 986

2nd Floor = 986

Total = 1972 S.F.

Second Floor Plan Layout
8 foot Ceilings
Shown with Optional 9 foot Ceilings



First Floor Plan Layout
9 foot Ceilings

